

Total squares **28.8sq**

 **4**  **2.5**  **2**



FLOORPLAN OPTIONS

All available ready-to-go floorplan options for this design can be viewed on the following pages, or visit www.burbank.com.au.

Facades available:

Drysdale, Arkley, Dowd, Haring
Nolan, Alpine, Woodland, Felix

Overall home width 12.59m

Overall home length 23.99m




Residence	215.8m ²	23.2sq
Garage	36.3m ²	3.9sq
Porch	5.4m ²	0.6sq
Alfresco	9.8m ²	1.1sq
Total	267.3m²	28.8sq

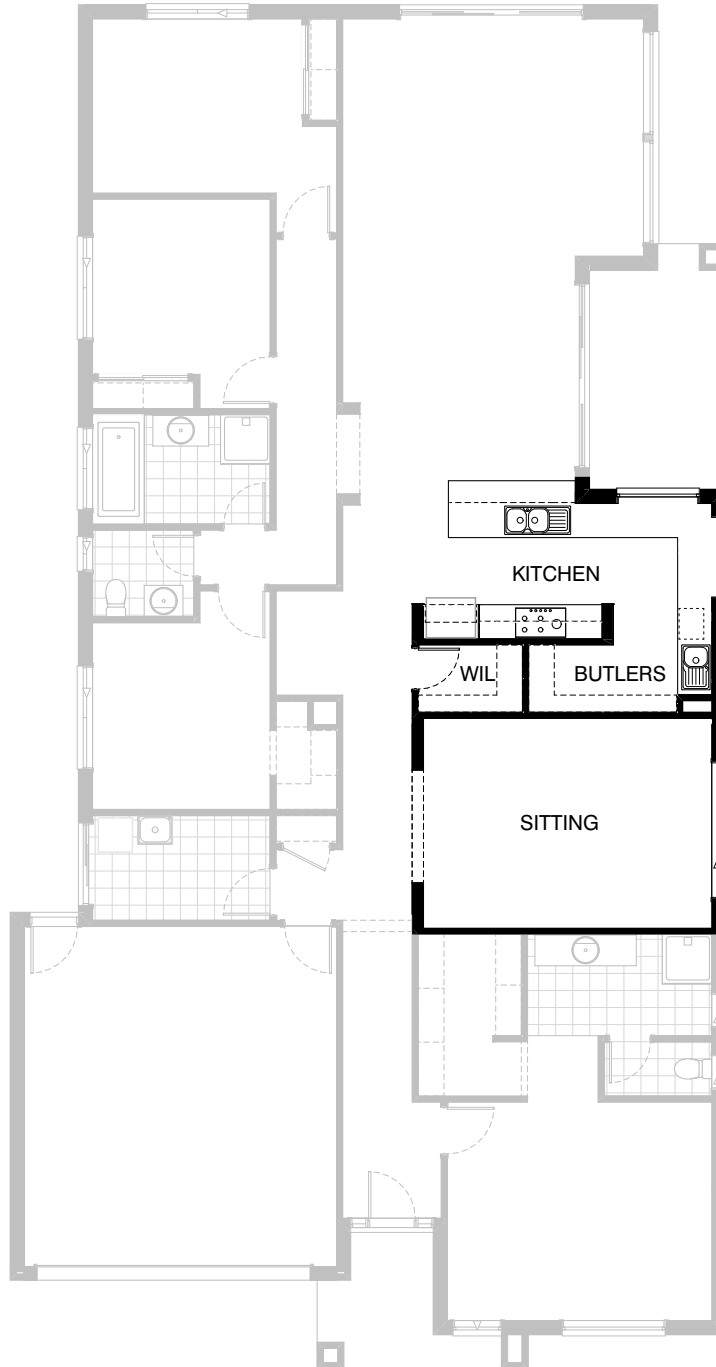
Listed details based on Drysdale façade floorplan (illustrated)

*Copyright conditions. All photos and illustrations are representative only. Floor plans and specifications may be varied by Burbank without notice, the dimensions are diagrammatic only and a Building Contract with final drawings will display correct dimensions and detail. All designs are the property of Burbank and must not be used, reproduced, copied or varied, wholly or in part without written permission from an authorised Burbank representative. Copyright Burbank Australia Pty Ltd. ABN 91 007 099 872. Builders Registration Number CDB-U-52603.

Call 13 BURBANK
Visit burbank.com.au

FLOORPLAN OPTIONS

 **4**  **2.5**  **2**




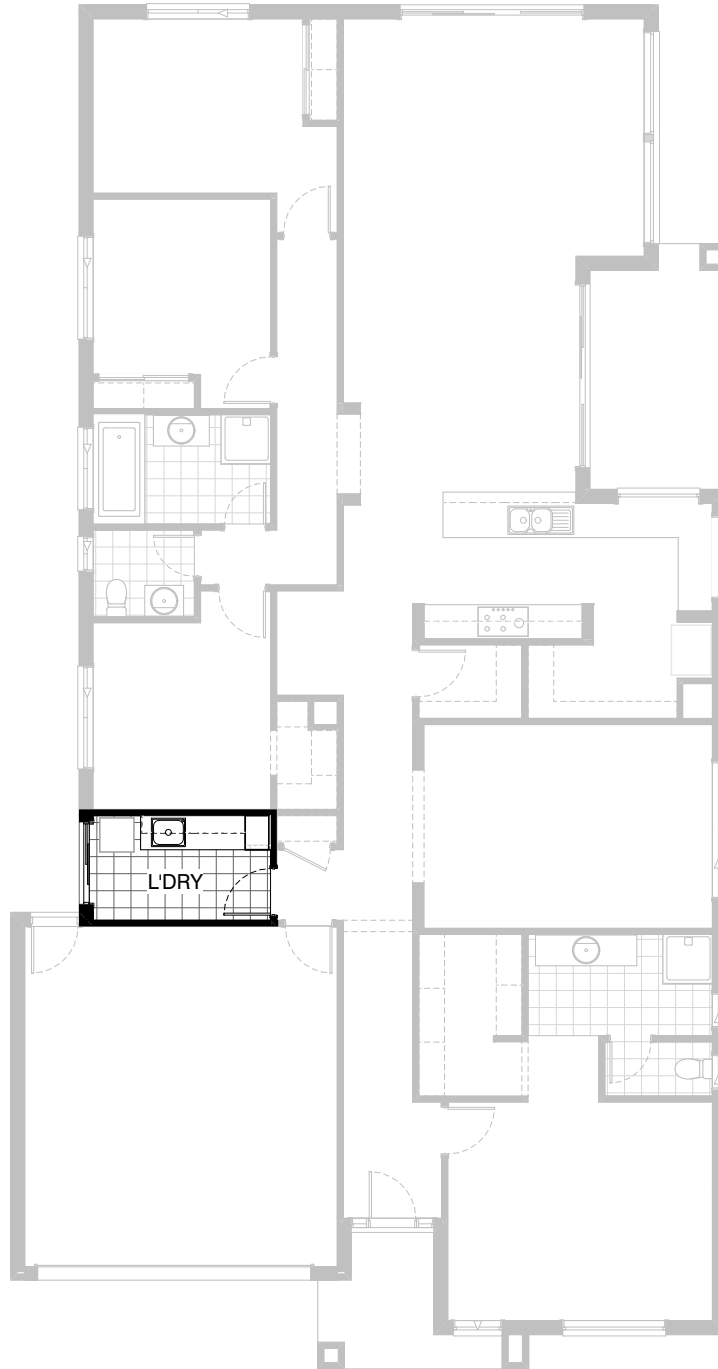
Option K-1

Provide Kitchen and Butlers pantry upgrade by reducing pantry and W.I.L by 110mm and increase sitting.
 1000mm deep Kitchen island bench, 20mm stone benchtops,
 1no. 450mm drawer cupboard, 2no. 450mm base cupboards,
 3no. 900mm base cupboards, 1no. laminated dishwasher provision,
 1no. 800mm base cupboard, 1no. 900x900mm corner base cupboard,
 1no. laminated microwave provision with pot drawer below,
 2no. 600mm base cupboards, 900mm cook top and under bench oven
 with retractable range hood over, 2no. 600mm overhead cupboards,
 1no. 900mm overhead cupboard for rangehood, 16mm laminated
 end panel including 900mm open shelf above fridge space,
 additional single bowl sink to butlers pantry, additional
 4no. 450mm and 300mm pantry shelves with additional tiled
 splashback and bench top to suit.

*Copyright conditions. All photos and illustrations are representative only. Floor plans and specifications may be varied by Burbank without notice, the dimensions are diagrammatic only and a Building Contract with final drawings will display correct dimensions and detail. All designs are the property of Burbank and must not be used, reproduced, copied or varied, wholly or in part without written permission from an authorised Burbank representative. Copyright Burbank Australia Pty Ltd. ABN 91 007 099 872. Builders Registration Number CDB-U-52603.

FLOORPLAN OPTIONS


 **4**  **2.5**  **2**



Option LD-1

Provide Laundry upgrade with laminated inset trough, 2no. 900mm base cupboards, 1no. 400mm laminated broom cupboard, 2no. 900mm overhead cupboards and additional tiled splashback and bench top to suit.

FLOORPLAN OPTIONS


 **4**  **2.5**  **2**

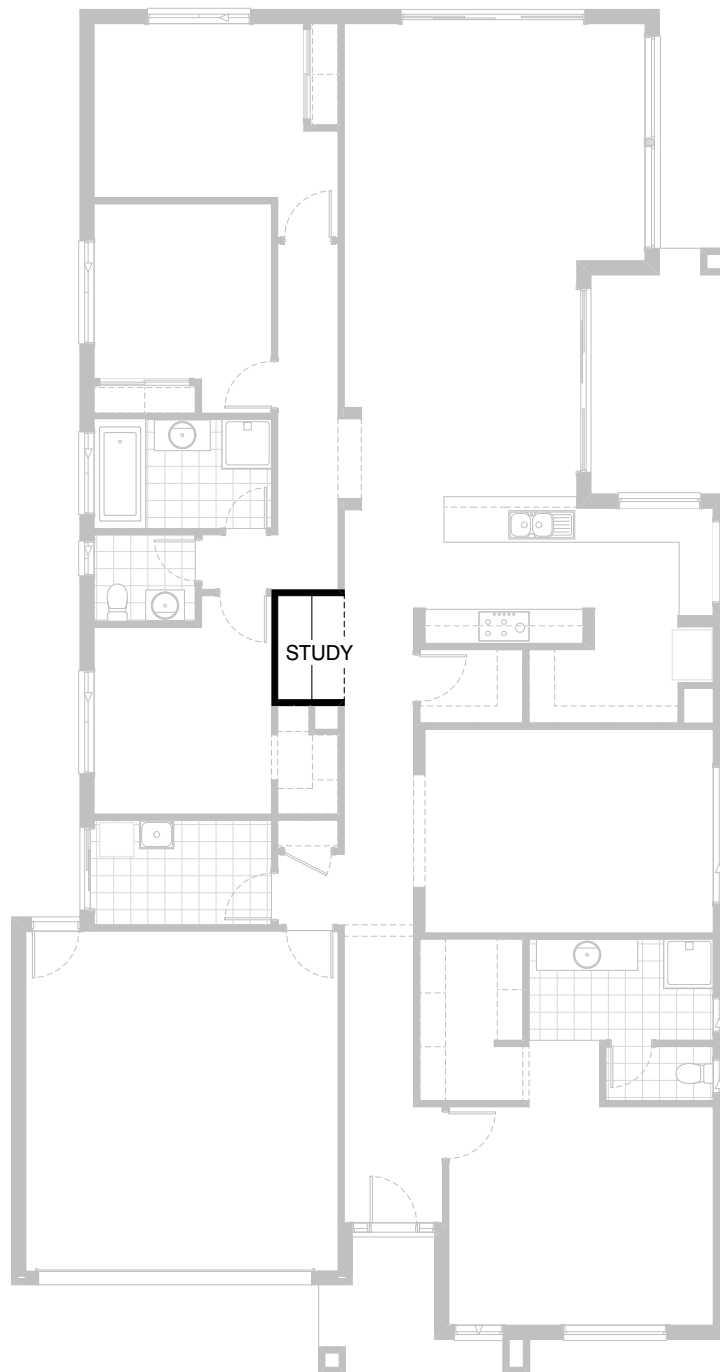


Option ENS-1

Provide Ensuite upgrade with internal redesign,
1no. 900mm x 1500mm tiled shower base, double vanity,
double stud nib wall to side of vanity,
additional 450mm shelf with hanging rail to
W.I.R & 300mm deep by 790mm wide bulkhead

FLOORPLAN OPTIONS




 **4**  **2.5**  **2**



Option IP1-1

Provide 32mm laminate benchtop 1850mm long
with 600mm x 300mm drawer unit to study nook

FLOORPLAN OPTIONS




 **4**  **2.5**  **2**

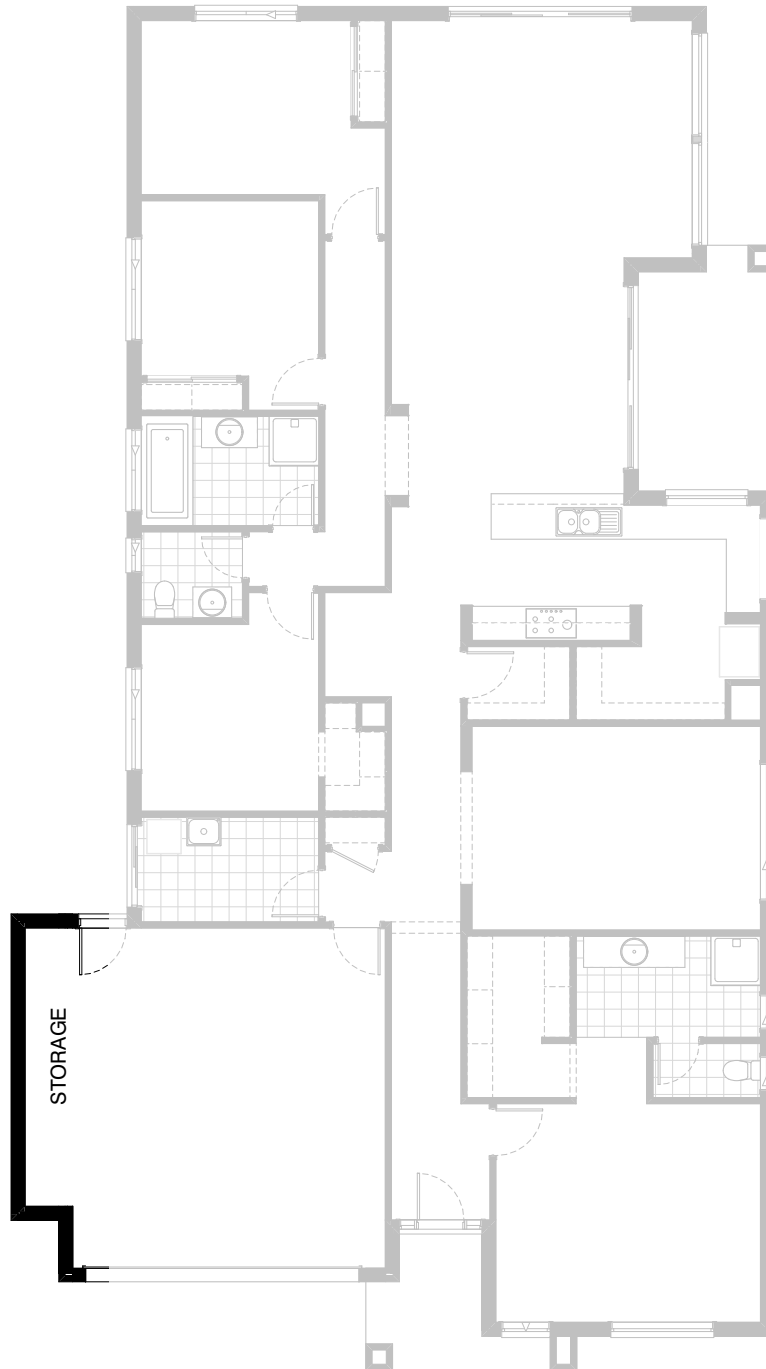


Option IP1-2

Provide Jetmaster 3X Series gas fireplace, 400mm off floor level in a 1400mm x 420mm boxed out plaster wall with a 4 sided black fascia to Living room side wall.
Provide 2no. 1800x850mm fixed aluminium windows in lieu of 2no. 1800x1810mm

FLOORPLAN OPTIONS

 **4**  **2.5**  **2**

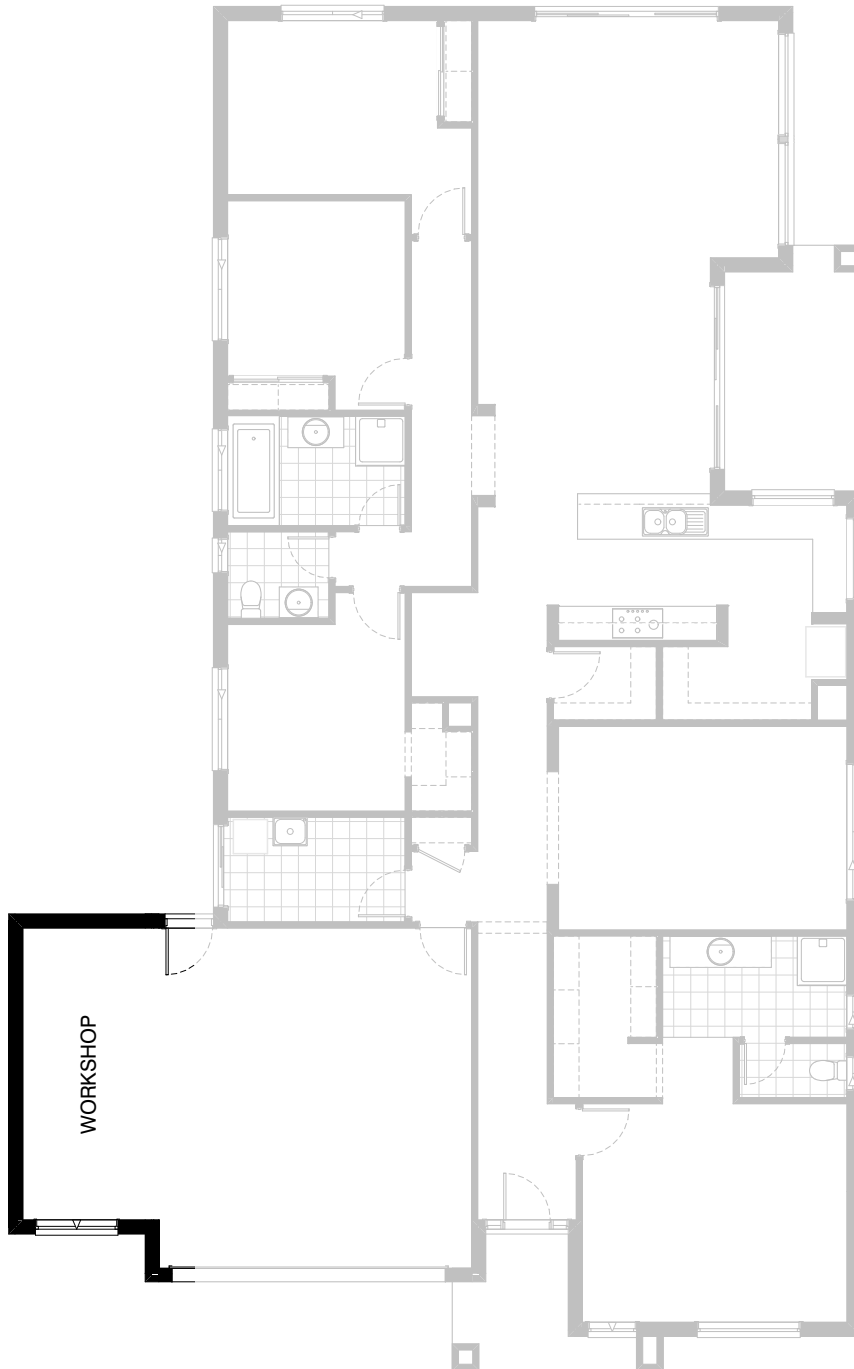


Option G-1

Provide extension to Garage to create additional Storage area.
Increases area by 4.58m².
Increases width by 850mm

FLOORPLAN OPTIONS




 **4**  **2.5**  **2**

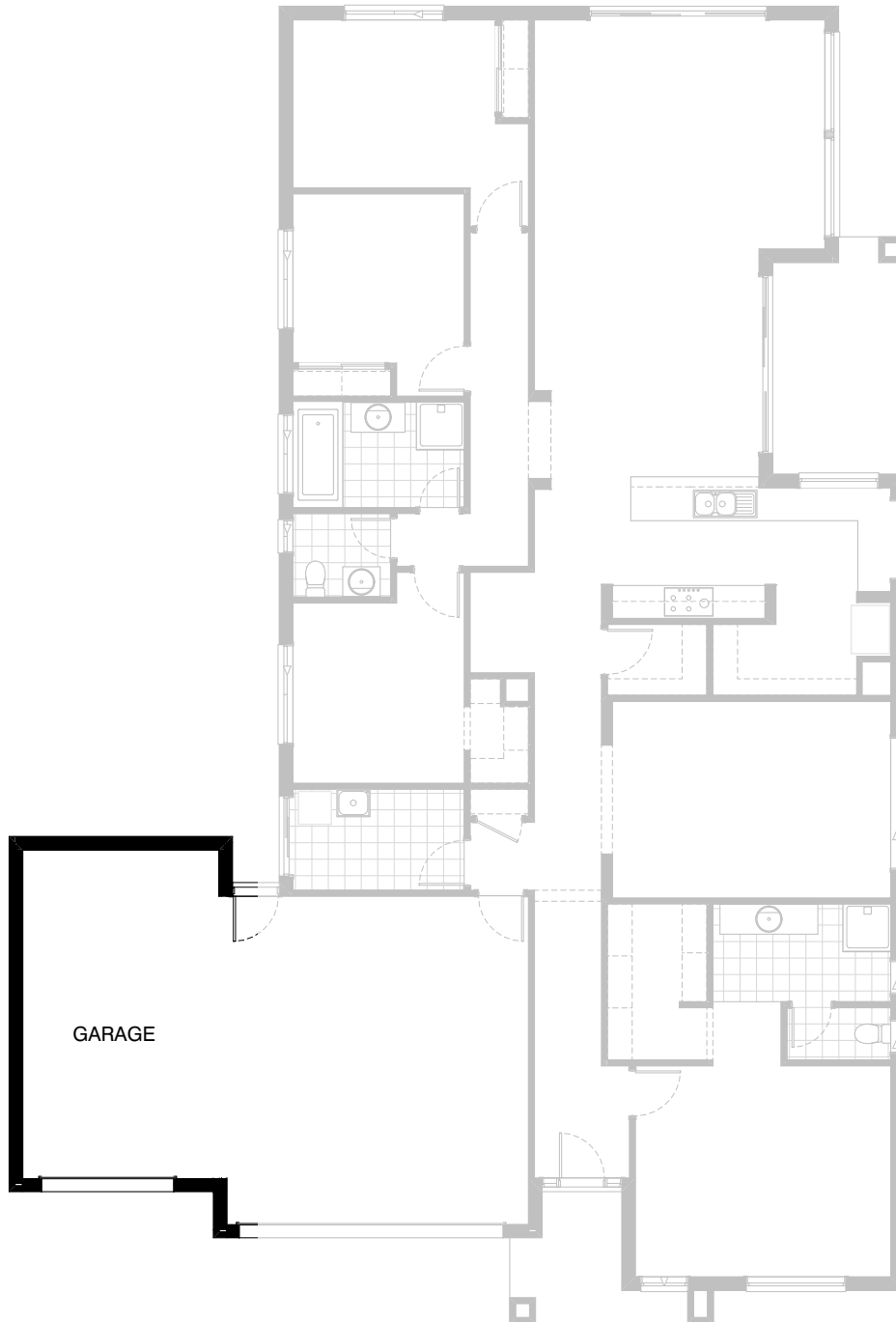


Option G-2

Provide extension to Garage to create
Workshop area including additional
2057mm x 1450mm awning window to suit.
Increases length by 2400mm.
Increases area by 13.51m².

FLOORPLAN OPTIONS

 **4**  **2.5**  **2**



Option G-3

Provide triple car Garage including additional sectional door to front.
Increases area by 24.36m².
Increases width by 3720mm.